



**Notice of meeting of  
Equality Advisory Group (formerly known as Social Inclusion  
Working Group)**

**To:** Councillors Ayre (Chair), Aspden, Brooks, Crisp (Vice-Chair)  
and Gunnell

Non Voting Co-opted Members:

Sue Lister, York Older People's Assembly  
Rita Sanderson, The BME Citizens' Open Forum (York Racial  
Equality Network)  
Daryoush Mazloum, The BME Citizens' Open Forum (York  
Racial Equality Network)  
Revd. Paul Wordsworth, Churches Together in York  
David Brown, Access Group  
Claire Newhouse, Higher York  
Becca Cooper, York People First  
Fiona Walker, Valuing People Partnership  
John Burgess, Voluntary Sector Mental Health Forum  
Diane Roworth, York Independent Living Network  
Lynn Jeffries, York Independent Living Network  
Simon Rodgers, LGBT  
Hann Bunn, LGBT

**Date:** Tuesday, 15 February 2011

**Time:** 6.00 pm

**Venue:** Denham Room, Priory Street, York

**AGENDA**

**1. Declarations of Interest**

At this point Members are asked to declare any personal or prejudicial interests they may have in the business on this agenda.

**2. Minutes**

(Pages 3 - 40)

To approve and sign the minutes of the last meeting of the Group held on 11 November 2010. An “easy read” version of these minutes is also attached.

**3. Public Participation**

At this point in the meeting members of the public who have registered their wish to speak regarding an item on the agenda or an issue within the Group’s remit can do so. Anyone who wishes to register or requires further information is requested to contact the Democracy Officer on the contact details listed at the foot of this agenda. The deadline for registering is 5.00pm on Monday 14 February 2011.

**4. Responses to Community Issues**

Officers will be present to discuss the following issues raised by community groups at the last meeting:

- Equalities profiling form – Lesbian Gay Bisexual and Trans question
- Disabled User Toilets – responding when the alarm is raised
- Green Badge Scheme – allocating new badges under the Green Badge Scheme
- Consideration of access issues in the design of the new HQ.

**5. Community Issues**

This item presents an opportunity for community representatives on the Equality Advisory Group to raise further equality and inclusion matters about council policy and services as they affect the groups they represent.

**6. EAG Poverty Awareness Raising Project**

Discussion and finalisation of the details of the poverty project co-ordinated by the LGBT Forum.

**7. Library Square Proposals**

Discussion about proposed changes to disabled parking facilities at Library Square.

**8. Pedestrian safety in shared areas**

Discussion about pedestrian safety in Cycling City and the Foot Streets Review.

**9. Equality Advisory Group meeting with City of York Council Corporate Management Team** (Pages 41 - 48)

Report on the EAG meeting with the City of York Council Corporate Management Team and next steps.

**10. Budget 2011-12** (Pages 49 - 78)

Report from the informal meeting about the budget on 19 January 2011 and next steps.

**11. Any other business which the Chair considers urgent under the Local Government Act 1972**

Democracy Officer:

Name: Jayne Carr

Tel: (01904) 552030  
jayne.carr@york.gov.uk

For more information about any of the following please contact the Democracy Officer responsible for servicing this meeting:

- Registering to speak
- Business of the meeting
- Any special arrangements
- Copies of reports

Contact details set out above.

This page is intentionally left blank

## About City of York Council Meetings

### Would you like to speak at this meeting?

If you would, you will need to:

- register by contacting the Democracy Officer (whose name and contact details can be found on the agenda for the meeting) **no later than 5.00 pm** on the last working day before the meeting;
- ensure that what you want to say speak relates to an item of business on the agenda or an issue which the committee has power to consider (speak to the Democracy Officer for advice on this);
- find out about the rules for public speaking from the Democracy Officer.

**A leaflet on public participation is available on the Council's website or from Democratic Services by telephoning York (01904) 551088**

### Further information about what's being discussed at this meeting

All the reports which Members will be considering are available for viewing online on the Council's website. Alternatively, copies of individual reports or the full agenda are available from Democratic Services. Contact the Democracy Officer whose name and contact details are given on the agenda for the meeting. **Please note a small charge may be made for full copies of the agenda requested to cover administration costs.**

### Access Arrangements

We will make every effort to make the meeting accessible to you. The meeting will usually be held in a wheelchair accessible venue with an induction hearing loop. We can provide the agenda or reports in large print, electronically (computer disk or by email), in Braille or on audio tape. Some formats will take longer than others so please give as much notice as possible (at least 48 hours for Braille or audio tape).

If you have any further access requirements such as parking close-by or a sign language interpreter then please let us know. Contact the Democracy Officer whose name and contact details are given on the order of business for the meeting.

Every effort will also be made to make information available in another language, either by providing translated information or an interpreter providing sufficient advance notice is given. Telephone York (01904) 551550 for this service.

যদি যথেষ্ট আগে থেকে জানানো হয় তাহলে অন্য কোন অর্ধতে তথ্য জানানোর জন্য সব ধরনের চেষ্টা করা হবে, এর জন্য দরকার হলে তথ্য অনুবাদ করে দেয়া হবে অথবা একজন দোআবী সরবরাহ করা হবে। টেলিফোন নম্বর (01904) 551 550।

*Yeteri kadar önceden haber verilmesi koşuluyla, bilgilerin terümesini hazırlatmak ya da bir tercüman bulmak için mümkün olan herşey yapılacaktır. Tel: (01904) 551 550*

我們竭力使提供的資訊備有不同語言版本，在有充足時間提前通知的情況下會安排筆譯或口譯服務。電話 (01904) 551 550。

اگر مناسب وقت سے اطلاع دی جاتی ہے تو ہم معلومات کا ترجمہ مہیا کرنے کی پوری کوشش کریں گے۔ ٹیلی فون (01904) 551 550

*Informacja może być dostępna w tłumaczeniu, jeśli dostaniemy zapotrzebowanie z wystarczającym wyprzedzeniem. Tel: (01904) 551 550*

### **Holding the Executive to Account**

The majority of councillors are not appointed to the Executive (40 out of 47). Any 3 non-Executive councillors can 'call-in' an item of business from a published Executive (or Executive Member Decision Session) agenda. The Executive will still discuss the 'called in' business on the published date and will set out its views for consideration by a specially convened Scrutiny Management Committee (SMC). That SMC meeting will then make its recommendations to the next scheduled Executive meeting in the following week, where a final decision on the 'called-in' business will be made.

### **Scrutiny Committees**

The purpose of all scrutiny and ad-hoc scrutiny committees appointed by the Council is to:

- Monitor the performance and effectiveness of services;
- Review existing policies and assist in the development of new ones, as necessary; and
- Monitor best value continuous service improvement plans

### **Who Gets Agenda and Reports for our Meetings?**

- Councillors get copies of all agenda and reports for the committees to which they are appointed by the Council;
- Relevant Council Officers get copies of relevant agenda and reports for the committees which they report to;
- Public libraries get copies of **all** public agenda/reports.

City of York Council

Committee Minutes

---

Meeting	Equality Advisory Group (formerly known as Social Inclusion Working Group)
Date	11 November 2010
Present	Councillors Ayre (Chair), Aspden, Brooks, Crisp (Vice-Chair) and Gunnell  Non-voting Co-opted Members: David Brown – York Access Group Hann Bunn – LGBT Forum John Burgess – Mental Health Forum Lynn Jeffries – York Independent Living Network Sue Lister – York Older People’s Assembly Simon Rodgers – LGBT Forum Diane Roworth – York Independent Living Network Rita Sanderson – York Racial Equality Network  Expert Witnesses: Tony Martin – York Older People’s Assembly Claire Newhouse – Higher York Russell Norton – LGBT Forum Maureen Ryan – Valuing People Partnership
Apologies	Daryoush Mazloum – York Racial Equality Network Carolyn Suckling – Access Group Paul Wordsworth – Churches Together in York George Wright - Humanist

---

#### 11. **Declarations of Interest**

Members were invited to declare at this point in the meeting any personal or prejudicial interests they might have in the business on the agenda. None were declared.

#### 12. **Minutes**

Resolved: That the minutes of the meeting of the group held on 30 June 2010 be approved as a correct record subject to minute 4 being amended to record “that other members of the group supported Councillor

Aspden's request that his unease at perceived narrowing of the group's focus be recorded".

In accordance with the Group's request that their recommendations were tracked to ensure that they were being actioned, an update was given on matters arising from the previous minutes:

(i) Allocation of £1000 Poverty and Exclusion Awareness Raising Fund

It was noted that Sarah Fennell, who had been co-ordinating the arrangements for the filming of a documentary to raise awareness of poverty and social exclusion, had resigned as a member of the Equality Advisory Group. It was unclear as to whether any progress had been made with the project.

Resolved: (i) That Simon Rodgers look into this matter following the meeting.<sup>1</sup>

(ii) Disabled User Toilets

The Group was informed that discussions were still ongoing as to whether it would be possible to ensure that a member of staff was alerted if an alarm in the disabled user toilets was activated. Members of the Group suggested that the alarms should be linked to warden call. If this was not possible the alarms should be removed as they currently provided a false sense of security. Concerns were also raised regarding problems in respect of accessibility and design of the toilets and basins.

Resolved: (ii) That "Disabled User Toilets" be an agenda item for the next meeting and relevant officers be invited to attend to discuss the issues that had been raised.<sup>2</sup>

Action Required

- |                                   |    |
|-----------------------------------|----|
| 1. Notify EAG members of progress | EC |
| 2. Agenda item for next meeting   | EC |



**13. Public Participation**

It was reported that there had been no registrations to speak under the council's Public Participation Scheme.

**14. Community Issues**

The Chair welcomed new members to the group. Introductions were carried out.

Community representatives were given an opportunity to raise equality and inclusion matters about council policy and services as they affected them and the groups they represented. The following issues were raised:

(i) Green Badge Scheme

Sue Lister, on behalf of the York Older People's Assembly, raised concerns regarding the difficulties that a member of the public had faced when trying to obtain a green badge permit. Members of the group agreed that there was a lack of clarity as to the areas covered by the green badges, how they differed to the blue badge permits, and as to whether they had to be renewed on an annual basis.

Resolved: (i) That further information on this issue be provided at the next meeting<sup>1</sup>.

(ii) Pedestrian Safety on Beckfield Lane

Sue Lister, on behalf of York Older People's Assembly, raised the issue of pedestrian safety on Beckfield Lane. Concerns had been expressed as to whether an Equality Impact Assessment had been completed which considered the needs of vulnerable pedestrians in the context of encouraging cycling on pavements. Members of the group stated that pedestrian safety was an issue in many areas of the city. Shared space could be very difficult for pedestrians, particularly for children, people with mobility problems or those with hearing or sight difficulties.

Resolved: (ii) That officers from Cycling City be requested to attend the next meeting to give further information on this issue.<sup>2</sup>

(iii) York Older People's Assembly Questionnaire

The Group was informed that 105 questionnaires had been completed at the 50+ Festival. It was hoped that the information they contained would be very useful to the council. Thanks were expressed to Claire Newhouse for the advice she had offered in respect of processing the data.

(iv) Homecare

Lynn Jeffries drew the group's attention to the Equality and Human Rights Commission Inquiry into Homecare. It was suggested that the Equality Advisory Group may wish to contribute to the inquiry.

Resolved: (iii) That details of the inquiry into homecare be forwarded to the group<sup>3</sup>.

(v) Good Neighbour Guide

Claire Newhouse gave details of the work that Higher York's students' forum was carrying out to prepare a "Good Neighbour Guide". Ideas for items for inclusion in the guide were welcome.

(vi) Valuing People Partnership

Maureen Ryan gave details of issues that had been raised by the Valuing People Partnership including:

- Respite care
- Leisure – how people with disabilities spend their time.

It was hoped that a survey could be carried out which would assist integrated working as well as highlighting any omissions in provision.

It was noted that at the launch of the York Independent Living Network, the issue of respite care had also been

raised and hence there might be the opportunity for the two organisations to work together on this. It was suggested that the personalisation agenda would link to the issue of leisure.

(vii) YREN Representation on the Equality Advisory Group

Rita Sanderson reported that, at their next meeting, YREN would be nominating their two representatives to serve on the Equality Advisory Group for the next year. In view of the Equalities Act the group would not be specifying that there should be one male representative and one female representative. YREN's feedback report on its involvement with the Equality Advisory Group would be made available. The feedback would acknowledge that there had been some very positive changes in the development of the EAG.

(viii) Sharing of Information

Rita Sanderson drew the group's attention to work that the City of York Council's Early Intervention Manager was carrying out to obtain information about child poverty in the city. YREN would be contributing to the information and encouraged other groups to do the same as the sharing of information prevented duplication of work.

(ix) York Independent Living Network

Lynn Jeffries informed the group that there had been very positive feedback following the launch of the York Independent Living Network (YILN). The key issues for members of the network were around personalisation.

Members of the group stated that they hoped that the council would engage in honest and open dialogue with community groups with regard to the personalisation agenda.

(x) Accessible Buildings

Lynn Jeffries, on behalf of YILN, expressed concern that a number of council buildings were not accessible, including the equipment centre. It was also a cause of concern that

guidance was not always followed in terms of the decorating of council buildings and signage.

Resolved: (iv) That an item on “planning, access and design” be included on the agenda for a future meeting.<sup>4</sup>

(xi) International Shared Meal

The Group were invited to look at the display boards illustrating the recent international shared meal. This had been a very successful event.

(xii) Forthcoming Events

The EIA Fair would take place on 30 November 2010. The programme for the day would be circulated to members of the group and via the York CVS.<sup>5</sup>

Representatives of community groups gave details of forthcoming events to which members of the EAG were invited to attend.

Action Required

- |                                     |    |
|-------------------------------------|----|
| 1. Report back to next meeting      | EC |
| 2. Report back to next meeting      | EC |
| 3. Circulate weblink to EAG members | EC |
| 4. Include on EAG workplan          | EC |
| 5. Circulate EIA Fair programme     | EC |

**15. Spending Review and Council Budget**

A presentation was given on the Spending Review and how the review was expected to affect council budgets and ways of working. A copy of the presentation is attached as an annex to these minutes. Officers explained that the actual financial impact for the City of York Council would not be known until December but that the potential loss to the council could be several million pounds. In order to meet this challenge, work was already taking place, under the More For York programme, to transform the way in which the council operated.

The presentation included details of how members of the Equality Advisory Group could be involved in the budget

consultations that would be taking place. There would be an initial opportunity for members of the group to raise issues at the meeting that had been arranged with the council's chief executive and directors on Wednesday 15 December 2010. A special meeting of the Equality Advisory Group would be convened in January when more detailed information about the budget would be available.<sup>1</sup> Community representatives on the EAG would then have the opportunity to consult their groups about the impact of proposed cuts or growth areas.

The group's attention was drawn to a government document entitled "Overview of the impact of Spending Review 2010 on equalities". It was reported that the Equalities and Human Rights Commission had issued guidance for people making budget decisions in the public sector. The guidance had been circulated to relevant council officers and councillors.

Following the presentation the group made the following comments:

- In respect of the data that indicated that 2.5% of the population in York received help to live at home, the group requested more information as to how this figure was defined.<sup>2</sup>
- Because both the City of York Council and the PCT were low spending authorities this meant that any cuts to services had an even greater impact.
- Community representatives were encouraged to stress to their members, the importance of completing next year's census. It was important that the data collected about the city was as accurate as possible and that it was funded accordingly.
- It was important that the information that was presented to the public as part of the consultation was fully accessible. The York Blind and Partially Sighted Society offered their services in making information accessible and distributing it to those on their database<sup>3</sup>.
- It was important that very effective audit and monitoring arrangements were in place when services were commissioned.
- The council could save money by ensuring that the information that it provided to the public was accessible at source. It was noted that the Corporate Equality and Inclusion Manager served on the Accessible Information Working Party convened by the Valuing People

Partnership. There was a commitment to create a charter to ensure that information provided by the council and other organisations such as the PCT was accessible and that the guidance was disseminated to all staff.

- Members of the group stated that it was important that EIAs focussed on the needs of groups of vulnerable individuals and the level of care they required.
- Information was sought as to whether there had been a change in council policy in respect of people receiving residential care outside of the authority, as it appeared that a number were now returning to be cared for within York. Clarification was sought as to whether this decision had been taken to make financial savings.<sup>4</sup>
- Clarification was sought as to whether EIAs were being carried out as part of the More for York process. Officers confirmed this to be the case and stated that a number of these had been considered by the EAG.
- During discussion regarding collecting equality data from people who respond to council budget consultations, Simon Rodgers requested that the equalities questionnaire that had been agreed at the meeting on 30 June 2010 be amended to read “sexual orientation” rather than “partnership preference”. This terminology was in line with guidance issued by organisations such as Stonewall. Members of the group explained why the recommendation had been made to use the term “partnership preference” but agreed that this should be replaced by “sexual orientation” when the questionnaire was used in future.<sup>5</sup>

Action Required

- |   |    |
|---|----|
| 1. Update EAG workplan                  | EC |
| 2. Circulate information to EAG members | EC |
| 3. Notify relevant officers             | CC |
| 4. Circulate information to EAG members | EC |
| 5. Update questionnaire                 | EC |

Councillor N Ayre, Chair

[The meeting started at 6.00 pm and finished at 9.00 pm].

# Equality Advisory Group

## Budget Consultation 2011/12

11<sup>th</sup> November 2010

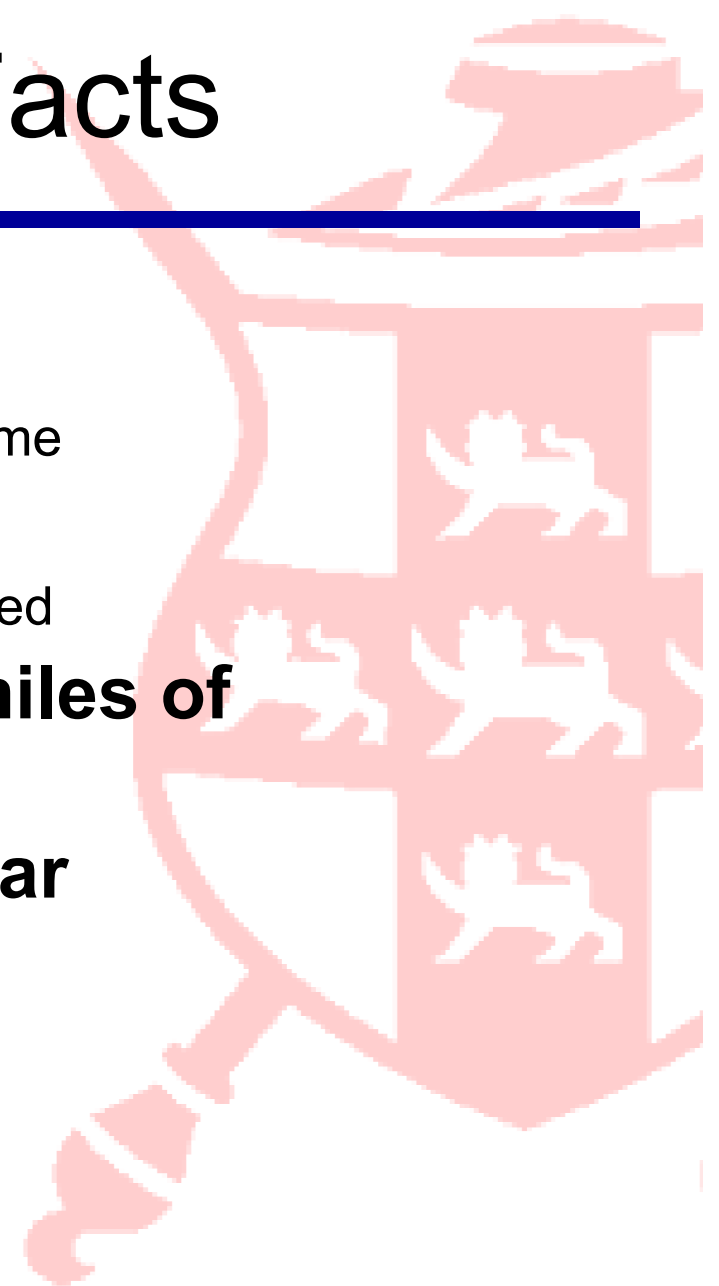
*more for York*



*more for York*

# York – Key Facts

- **Population – 197,000**
  - 2.5% receive help to live at home
- **84,500 dwellings**
  - 9.4% of which are council owned
- **468 miles of roads, 606 miles of footways**
- **7.95m day visitors per year**
- **68 Schools**
- **4,350 Council staff**





# CYC - Local Challenges

Locally, challenges facing the Council include:

- Ageing and rising care population.
- Effects of Economic Downturn.
- Waste Management.
- Concessionary Fares.



# CYC - Big Picture Challenges

---

Nationally, CYC will be affected by:

- Change of Government with its new approach: “Localism”.
- Reduction of National Deficit.



# CYC - Big Picture Challenges

---

As a result, there will have to be:

- Greater local accountability.
- Significant reductions in central funding.
- Changes to the ways services are provided.



# Spending Review Impacts

20<sup>th</sup> October announcement has numerous impacts on Local Government – headlines were:

- Average 7.1% annual cut in funding.
- Funding for Council Tax freeze in 11-12.
- £4bn of grants into Formula Grant.
- Borrowing on loans more expensive.
- Upto 45% reduction in Capital funding.



# Spending Review Impacts

---

Actual financial impact on CYC not known until December.

Potential loss to the council could be several £m's.





## Specific Grants moved into Formula Grant

	£'000
Supporting People	7,089
Carers	715
Adult Social Care Workforce	419
Social Care Reform	709
Learning Disability	
Campus Closure	447
Preserved Rights	1,355

# Meeting the Challenge

Presents a challenging agenda as the Council attempts to balance rising demand with less resources.

Work has already started to transform the way the Council operates through the More for York Programme.

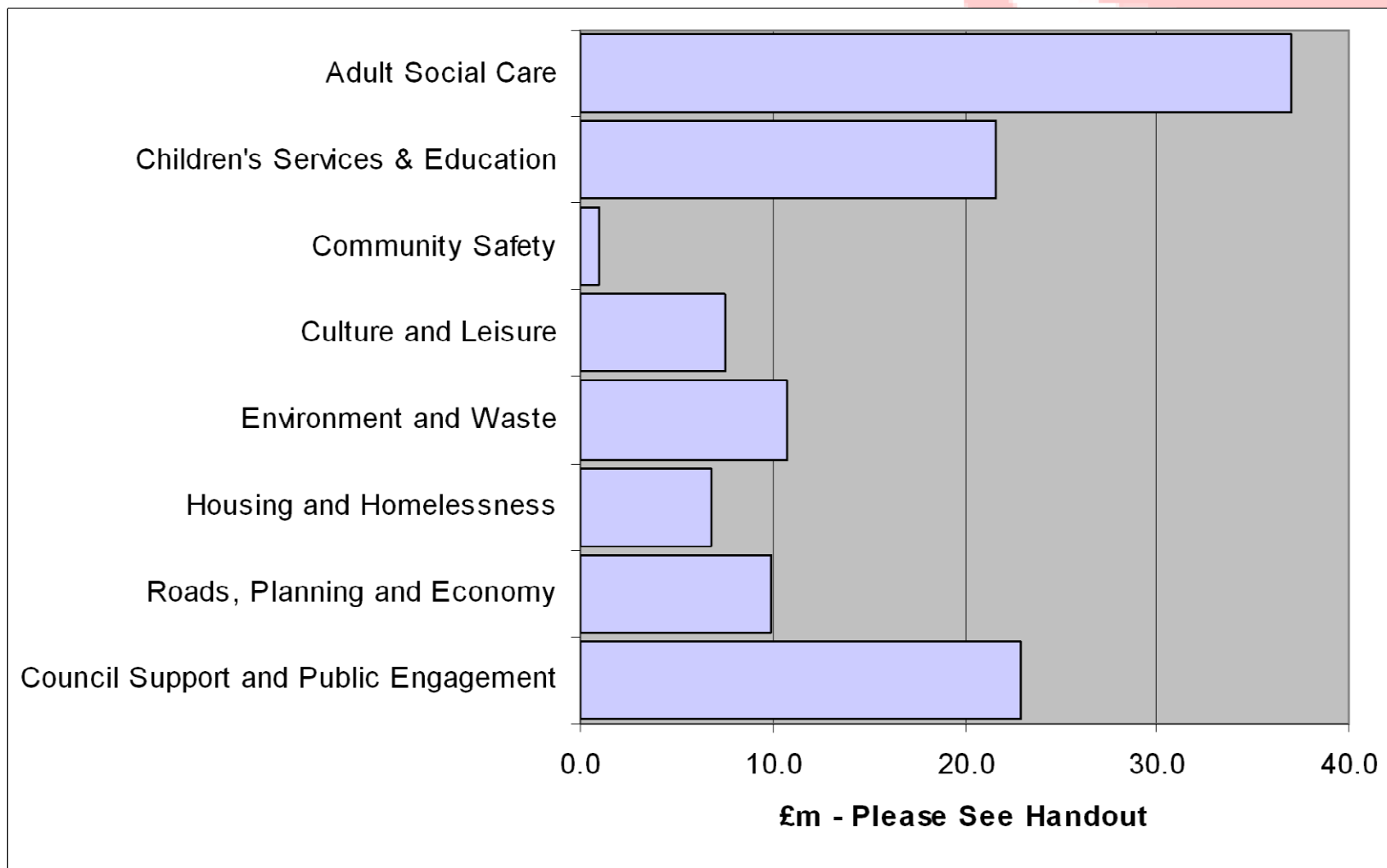


# 2010-11 Revenue Budget

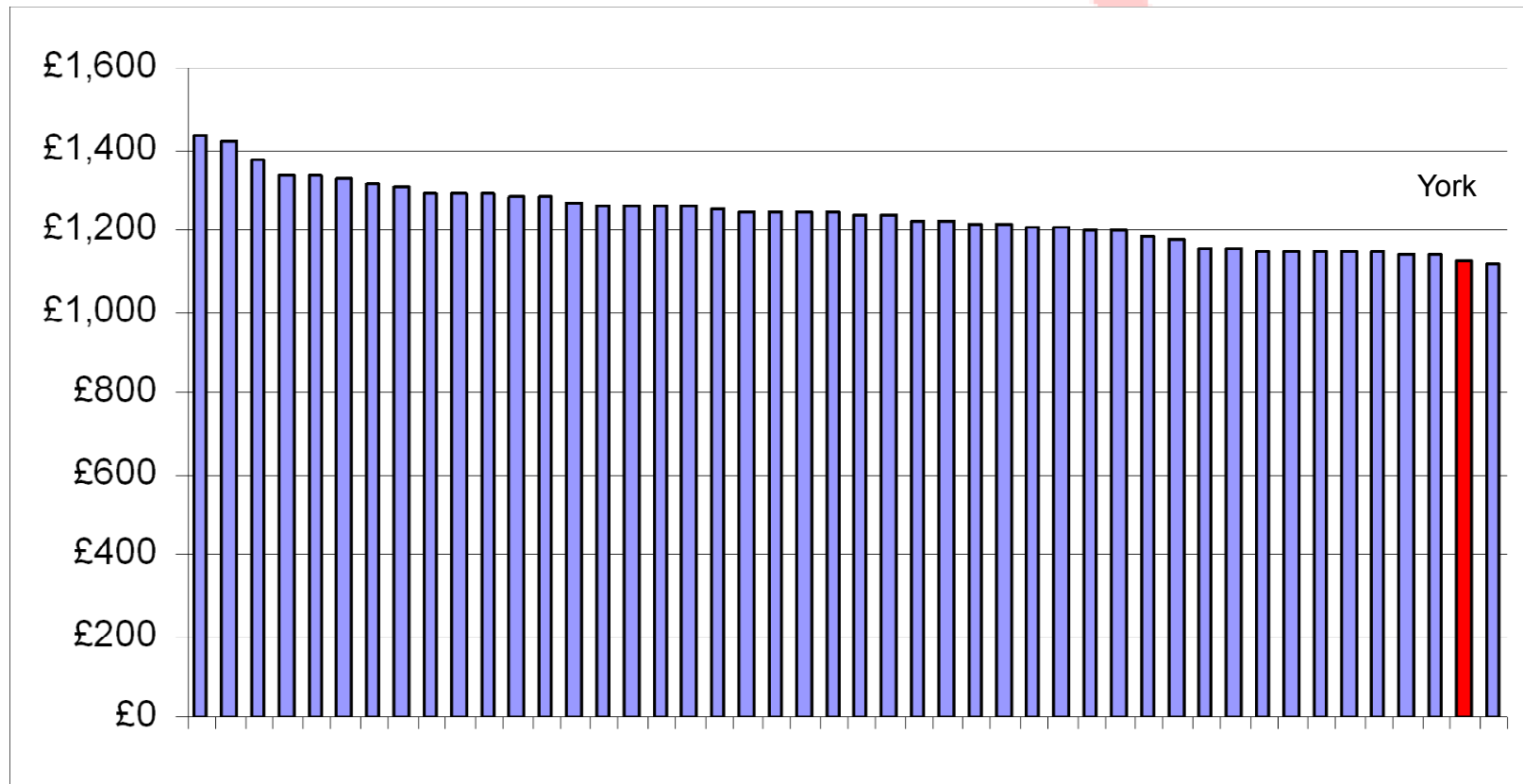
	£'m	
<b>Gross Budget</b>	<b>491</b>	
Dedicated Schools Grant	(93)	19.0%
Reimbursed Housing Benefit	(50)	10.1%
Fees, Charges & Rents	(26)	5.3%
Other Grants & Income	(205)	41.7%
<b>Net Budget</b>	<b>117</b>	
Funded by:		
•Council Tax	72	14.7%
•General Government Grant	45	9.2%



# What The Money Is Spent On

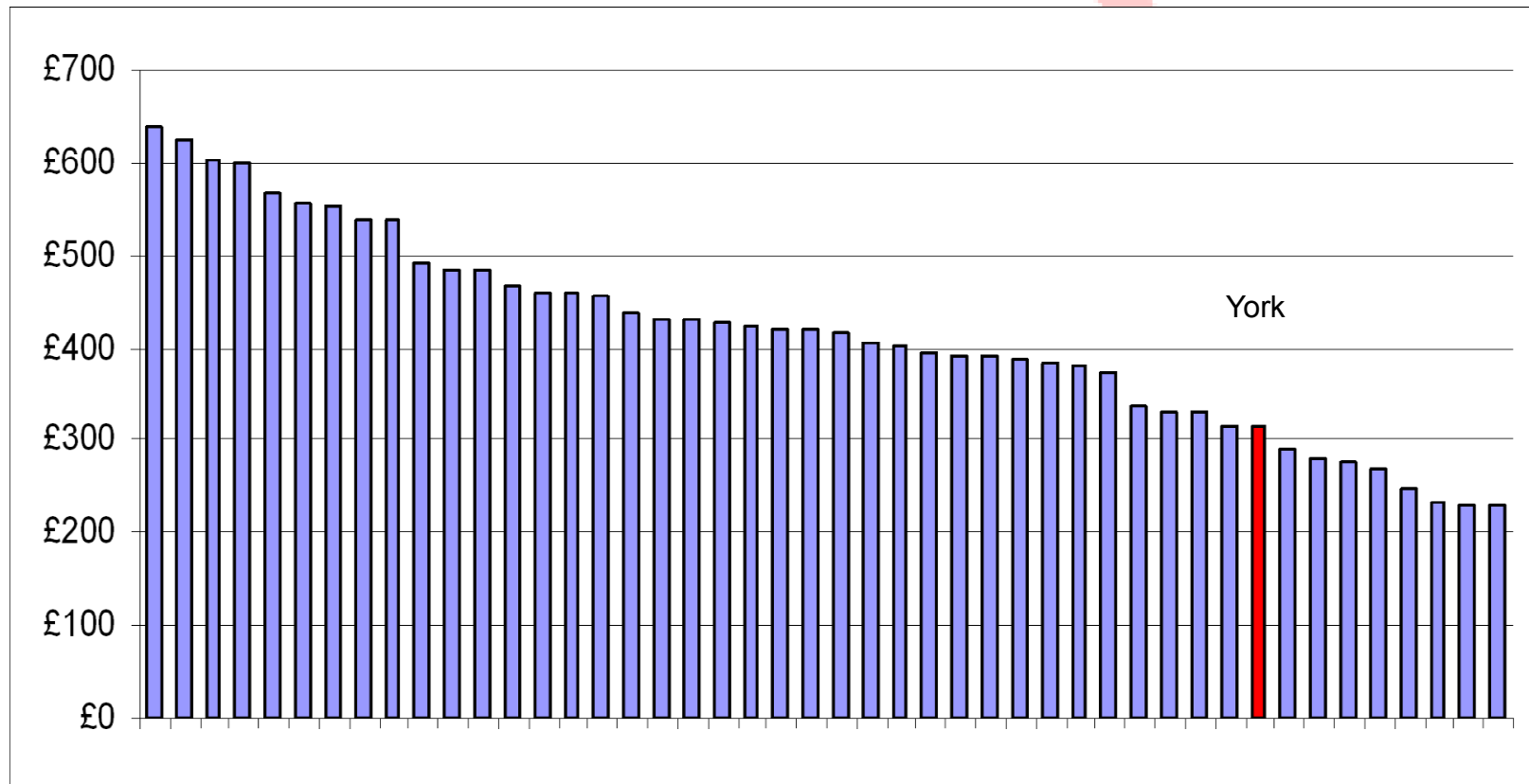


# How York's Band D Council Tax compares to others in 2010-11



**2<sup>nd</sup> Lowest out of 55 Similar Authorities**

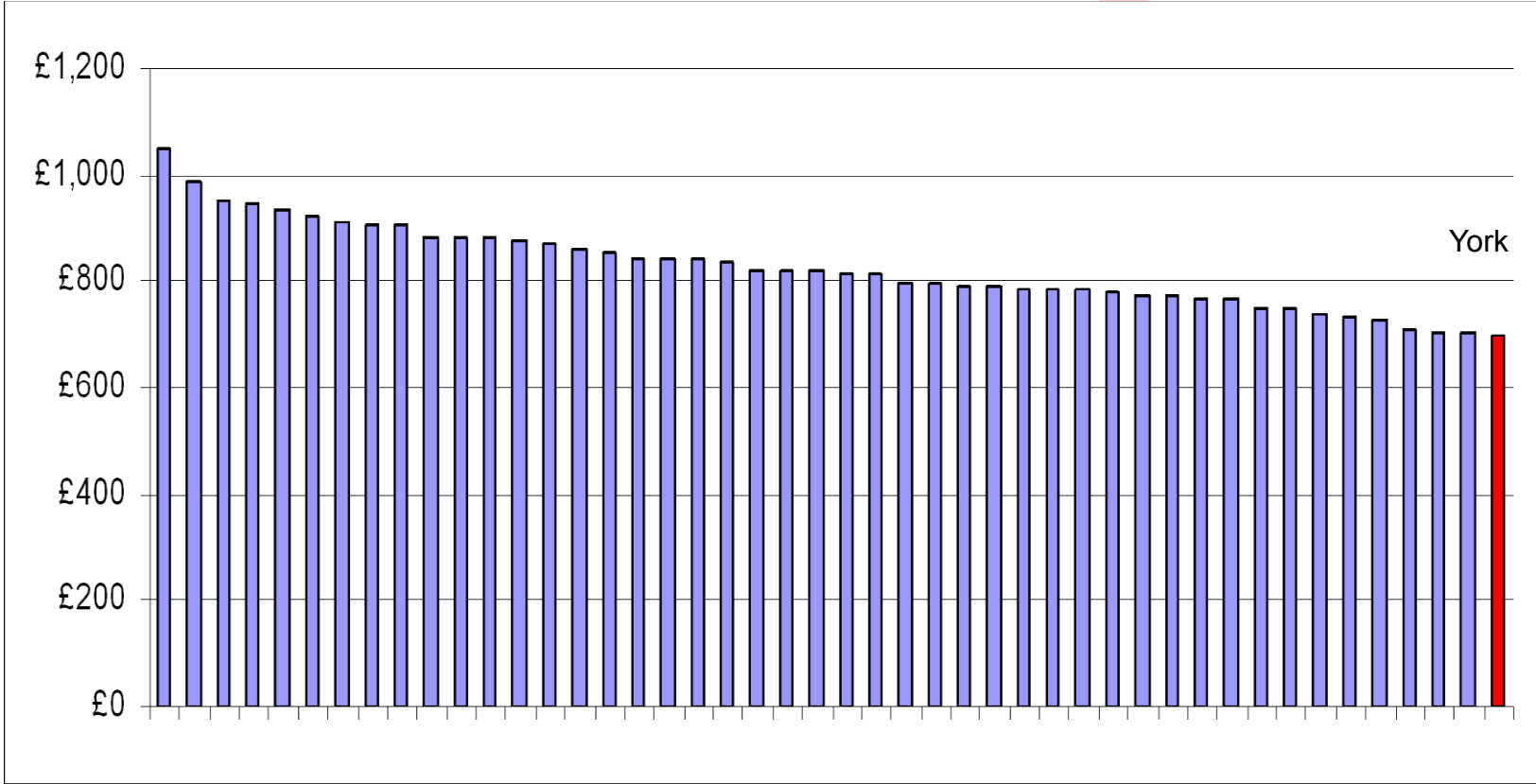
# General Government Grant Per Head in 2010-11



**9<sup>th</sup> Lowest out of 55 Similar Authorities**



# Spend Per Head in 2010-11



**Lowest out of 55 Similar Authorities**



# In Summary....

- York has a traditionally low Council Tax Base
- Grant Per Head received from the Government is comparatively low
- Spend per person in the district is low

**This results in a relatively high impact of :-**

- Spending Pressures
- Funding reductions
- Efficiency Targets



# Outline impact of CSR on CYC

- Revenue Support Grant £4.5m in 11/12 (£10m over 4 years)
- Council Tax Freeze grant £1.8m for 4 years
- Specific Grant Reductions £20m at risk
- Budget Gap £12m 11/12 £50m over 4 years



# The Current Challenge

- To reiterate, the 2011/10 Budget challenges:
  - Rising Cost Pressures
  - Significant Reduced Funding
- This results in having to reprioritise the services the Council provides to enable investment in priority areas, whilst balancing spending against income.



# The Current Challenge

- To reiterate, the 2011/10 Budget challenges:
  - Rising Cost Pressures
  - Significant Reduced Funding
- This results in having to reprioritise the services the Council provides to enable investment in priority areas, whilst balancing spending against income.





# Equality Advisory Group

## Budget Consultation Timeline

11<sup>th</sup> November 2010

*more for York*



*more for York*



# Public Consultation Timeline

---

## **November**

- Public Meeting with Talkabout Panel

## **December**

- Survey in Your City
- You-Choose Internet Survey

## **January**

- Feedback Meeting with public
- Business Consultation

## **February**

- Exec Report 15/2 Full Council 24/2

# Equalities Consultation Timeline

## **November**

- Update to EAG 11/11

## **December**

- Speed Dating EAG/CMT 15/12

## **January**

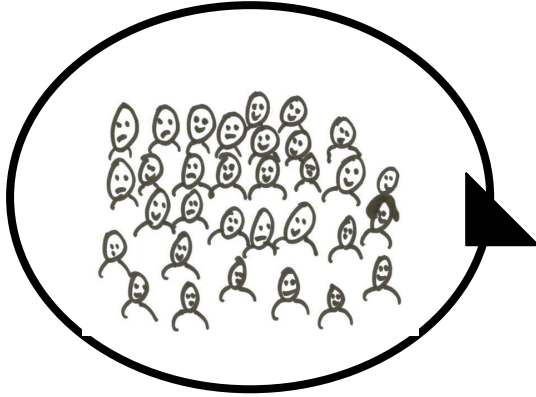
- Meeting to discuss specific Budget proposals/EIA's

## **February**

- Exec Report 15/2 Full Council 24/2



This page is intentionally left blank

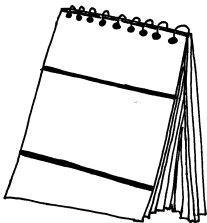


## Equality Advisory Group

*(This group looks at how all different communities in York can be given the same chances to take part in life and be included)*



## MINUTES



Date of meeting: 11 November 2010

**Members of the Council who were at the meeting**



**Nigel Ayre  
(Chair)**

**Sonja Crisp  
(Vice-Chair)**

**Keith Aspden**

**Jenny Brooks**

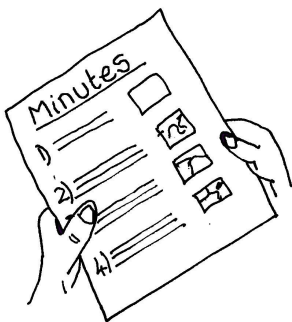
**Julie Gunnell**

**People who were at the meeting representing community groups and as expert witnesses:**



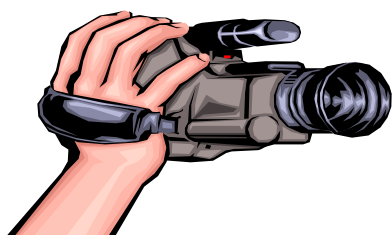
- David Brown (York Access Group)
- Hann Bunn (LGBT Forum)
- John Burgess (Mental Health Forum)
- Lynn Jeffries (York Independent Living Network)
- Sue Lister (York Older People's Assembly)
- Tony Martin (York Older People's Assembly)
- Claire Newhouse (Higher York)
- Russell Norton (LGBT Forum)
- Simon Rodgers (LGBT Forum)
- Diane Roworth (York Independent Living Network)
- Maureen Ryan (Valuing People Partnership)
- Rita Sanderson (York Racial Equality Network)

**1. Minutes**



The Group agreed that the minutes of the meetings of 30 June 2010 were correct if it was noted that some of the other members of the group also agreed with Councillor Aspden's comments about the change of name of the group.

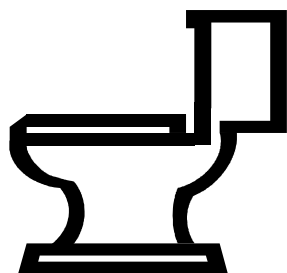
Details were given of the actions taken following the last meeting.



### **Film about Poverty**

Simon Rodgers said that he would try to contact Sarah Fennell to find out what was happening about the film on poverty.

### **Disabled User Toilets**



The Group was concerned that the alarms in the disabled user toilets were still not linked to someone who could help in an emergency. There were also problems with the design of some of the toilet areas.

The Group decided to ask someone from the council to come to the next meeting to discuss these problems with the group.

## **2. Community Issues**



The Chair welcomed new members to the Group. Introductions were carried out.

Community representatives told the group about any problems they had with council policy and services.

### **Green Badge Scheme**

A member of the York Older People's Assembly had found it difficult to obtain a green parking badge. The group wanted to know more about the scheme. Where could the Green Badge be used? How is it different to a blue badge?



The group asked for more information to be provided at the next meeting.

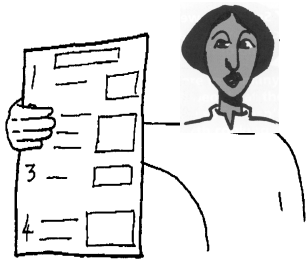
## **Pedestrian Safety**



Members of the York Older People's Assembly were concerned about pedestrian safety in Beckfield Lane. The group agreed that pedestrian safety was an issue in many areas of the city. Shared space could be dangerous for children, people with mobility problems or who had hearing or sight difficulties

The group asked for more information to be provided at the next meeting.

## **York Older People's Assembly Questionnaire**



105 questionnaires had been filled in at the 50+ Festival. The information they contained would be helpful to the council. Claire Newhouse offered advice about how the information in the forms could be sorted.

## **Homecare**



The Group heard about the Equality and Human Rights Commission Inquiry into Homecare. Information would be sent to members of the group so that they could have a say if they wanted to.

## **Good Neighbour Guide**



Higher York's students' forum was writing a "Good Neighbour Guide". Any ideas about what should be included were welcome



## Valuing People Partnership



The Valuing People Partnership had been considering the following:

- Respite care
- Leisure - how people with disabilities spend their time

They were going to do a survey to find out more. The information could then be used to improve services. It would also find out where there were gaps in what was provided.

## YREN Representation on EAG

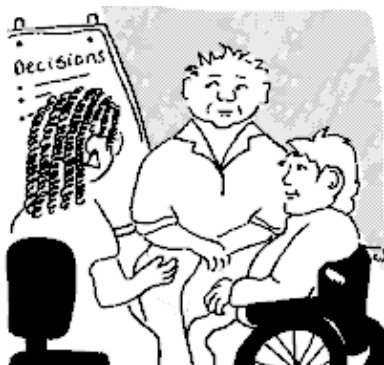


At their next meeting, YREN would be nominating their two representatives to serve on the EAG for the next year. They would also be giving feedback on the way in which they worked with the EAG. They were pleased at the way the group had developed.



## Sharing of Information about Child Poverty

Rita told the Group about work that was taking place by the council to find out more about child poverty in the city. YREN would be sharing information that they had and asked other groups to do the same.



## York Independent Living Network

Lynn told the Group that there had been very good feedback following the launch of the York Independent Living Network (YILN). The main topic had been personalisation. Personalisation means finding new ways to give people more choices about their care and support.

### Accessible Buildings



Lynn said that some of the council buildings were not easily accessible, including the equipment centre. Guidance on design and signs was not always followed.

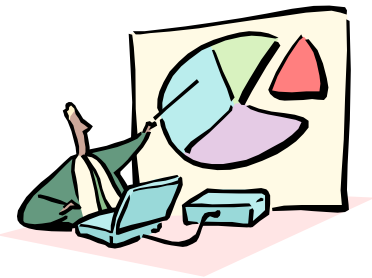
The Group agreed to talk more about this at a future meeting.

### International Shared Meal







The Group looked at display boards showing photos of the international shared meal. This had been a very good event.

### 3. Spending Review and Council Budget



The Group heard a presentation about the Government's Spending Review - the money that government departments would be spending over the next four years. This would have a big impact on how much the council could spend.

good	all right	bad	don't know
			

The Group heard about ways that they could be involved in the consultation that would be taking place about how the council should spend money. An extra meeting of the EAG would take place in January to hear the Group's views about the budget.



The council was already looking at ways of saving money and making services more efficient.

The Government and the Equalities and Human Rights Commission had issued guidance for people making budget decisions in the public sector. There was a need to look at the impact that the decisions would have on equalities.

The Group made the following comments:



- Because the council and the PCT were both low spending, any cuts made would have an even greater impact.



- People should complete next year's census forms. It was important that the data was correct so that York received the right amount of money.



- When the council arranged for services to be provided by other organisations it was important that checks were in place to make sure that they were working well.

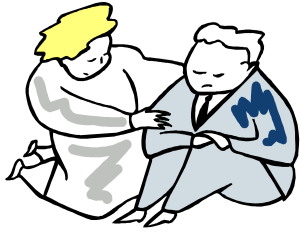


- It was important that Equality Impact Assessments (EIAs) were carried out. EIAs help council officers make sure that policies do not have a bad impact on people because of their gender, race, disability, age, religion or belief or sexual orientation.

- The EIAs should look at the needs of groups of people who are most at risk and decide what care is best for them.



- Council information should be accessible to all. The York Blind and Partially Sighted Society could help with this.



The Group asked if the council had changed its policy about people receiving residential care outside of York. They wanted to know if this had been done to save money.



The Group agreed a change to the form used by the council to collect equality information. The words "sexual orientation" would be used instead of "partnership preference".



---

**Meeting of the Equality Advisory Group****15 February 2011****Report of the Director of Communities and Neighbourhoods****Equality Advisory Group meeting with City of York Council  
Corporate Management Team – December 2010****Summary**

1. The report summarises points that were raised at the meeting between the Equality Advisory Group and the corporate management team that took place on 10 December 2010. It also considers the feedback from attendees and recommends next steps.

**Background**

2. The Chief Executive and the directors make up the council's corporate management team.
3. In June 2010, when reviewing its working arrangements for 2010-11, the Equality Advisory Group (EAG) requested a meeting with the team. The purpose was for the most senior council officers to report on progress with equality in council services and to discuss equality objectives for the coming year.
4. The meeting took place on 10 December 2010 and was attended by 39 delegates from each of the equality community groups that are members of the EAG. The Chief Executive, all the directors and a number of assistant directors attended, along with the EAG Chair and Vice Chair and some EAG councillors.
5. There were four round tables made up of representatives of the groups. The Chief Executive, the directors and their teams took turns to visit each table for face-to-face discussions.
6. Appendix 1 summarises equality community needs in the city that were raised during the discussions. These have been included in

the budget 2011-12 equality impact assessment for consideration by councillors as they make their decisions about budget allocations for 2011-12. They will also be taken into consideration when each director puts in place their service plans for 2011-12.

### **Feedback from community representatives**

7. 26 out of 39 attendees filled in feedback forms at the end of the meeting.
8. 17 liked the meeting, 9 thought it was ok.
9. 19 enjoyed the roundtables, 7 thought they were ok.
10. 15 felt there were no barriers in joining the discussions. 1 felt able to join in discussions but did not. 10 felt there were barriers in joining the discussions. The barriers related to the availability of written information before and during the meeting (especially in Easy Read). Comments were also made about the venue not being fully inaccessible for attendees with sensory and physical impairments in particular.
11. 21 felt that there should be more events like this. 4 felt that maybe there should be more events like this. 1 felt there should not be events like this.

### **Recommendations**

12. The group is requested to note the contents of the report and to recommend to the Executive that the meeting takes place annually with a possibility of meeting twice a year if deemed necessary.

**Reason:** To ensure that group develops a close working relationship with council management team. To support the Chief Executive and directors in making sure that equality of opportunity and equality in outcomes continue to be priorities in council services.

### **Contact Details**

**Author: Evie Chandler  
Corporate Equality and  
Inclusion Manager  
Tel: 551704**

**Chief Officer Responsible for the  
report: Sally Burns  
Tel: 55 1000**

**Report  
Approved**

**Date**

**Wards Affected:**

**All**

**For further information please contact the author of the report**

### **Appendices**

**Appendix 1 – Notes of the meeting between Council Management Team and equality community groups on 10 December 2010**

This page is intentionally left blank



## **Appendix 1 –**

### **Notes of the meeting between Council Management Team and equality community groups on 10 December 2010**

Needs for future investment as put forward by the community groups attending the meeting

#### **City Strategy**

1. A Council HQ that is fully accessible to all.
2. Support for vulnerable groups to participate in the local economy. A city-wide disabled people employment policy. More employment opportunities for people with learning difficulties. Need to work more with businesses to encourage assisted employment.
3. Subsidised bus services for young people.
4. Wheelchair accessible buses. Bus passes (concessionary travel) that start before 9am to ensure people with learning difficulties can attend placements and other disabled people hospital appointments.
5. Quality public toilets – important for older and disabled but also important as a tourist city. Encourage businesses, tourist attractions and others to also provide Changing Places facilities
6. More/better-managed city centre parking spaces for disabled people.
7. More fully accessible community meeting spaces

#### **Corporate Business Support Services and Office of the Chief Executive**

1. Equality standards in procured service that are the same as in council services.
2. Budget – safeguard community groups that provide support to vulnerable people and council front line services
3. Improved access to council and partner services, starting with minimum standards for accessible written communication. Improve the council switchboard voice-recognition system. More face to face access for older people.

4. Benefits advice for older people

### **Adults, Children and Education (ACE) –General**

1. When commissioning external services, contracts should include specific clauses about inclusive employment and service delivery practices.
2. Keep community facilitators. They perform an invaluable role linking up provision in the city.
3. Ethnic make up of York is changing fast – council needs to work with voluntary organisations to provide more support.

### **ACE - Children and young people**

1. Support children from an ethnic minority background and raise awareness of cultural differences in schools
2. Tackle homophobic bullying in schools/the community and in adult sheltered housing.
3. Support for young carers. Need a Young Carers Card Scheme.
4. Deal with child poverty. Benefit changes and the withdrawal of Education Maintenance Allowance will exacerbate this.

### **ACE – Adults**

1. A council policy to employ older people. A lot of hidden unemployment as they do not sign on.
2. Support people with mental health problems to access employment or to retrain. Council needs to lead by example as an employer
3. Deal with older people isolation. Closure of day centres and replacement with individual packages means people have lost their friendships.
4. More information about services for carers and a carer drop-in centre.
5. Improve access to services and information for adults with learning difficulties who cannot read – e.g. by using DVDs. Provide more and dynamic employment and training opportunities for them.
6. Lack of respite care for carers is a big issue. Are the hotels that are used safe? Have the packages been designed well? People with autism don't want to go to a hotel – one size doesn't fit all in terms of respite care.

7. Personal budgets that provide a wide of choices.
8. Mental health: recognise that it affects a lot of people. More information about it. A centre or number to ring for people with mental health problems.

### **Communities and Neighbourhoods**

1. Safe, open, shared areas to play and congregate.
2. Community buildings that stay open 7 days a week.
3. Support Black and Minority Ethnic communities to stop feeling isolated and visible.
4. Support third sector to participate in procurement opportunities.
5. Strengthen and develop the relationship between the council and the voluntary sector.
6. Intergenerational activities and festivals that promote diversity
7. Better transport to activities e.g. to special Olympics training (York Wheels don't work after 5pm)
8. Safe and accessible pavements and footpaths
9. Accessible information about services
10. Co-ordinate information about affordable warmth

This page is intentionally left blank



---

**Meeting of the Equality Advisory Group****15 February 2011****Report of the Director of Communities and Neighbourhoods****Council Budget 2011-12 – Equality Impact Assessment and report from meeting on 19 January 2011****Summary**

1. This report is for information.
2. It summarises the discussion that took place at the recent meeting of the Equality Advisory Group (EAG), during which the Group examined growth and savings proposals in the draft council revenue budget for 2011-12.
3. The Group is requested to note the report.

**Background**

4. During the last meeting on 11 November 2010, the Group decided that a special meeting would be convened in January 2011 when detailed information about the budget 2011-12 would be available. This would enable the Group to discuss the impact of proposed council budget savings and growth areas on people with protected characteristics<sup>1</sup> who use council services. The meeting took place on 19 January 2011.
5. The issues raised at the meeting have informed the Equality Impact Assessment (EIA) for the revenue budget 2011-12. The EIA is attached as Appendix 1. It includes the notes from the meeting on 19 January 2010.

---

<sup>1</sup> “Protected characteristics” are gender, age, disability, race, religion and belief, sexual orientation, gender reassignment, marriage and pregnancy.

6. The EIA findings will be considered by the Executive and full Council before the budget for 2011-12 is finalised.

**Recommendations**

7. The group is requested to note the report and its appendix

**Contact Details**

**Author: Evie Chandler  
Corporate Equality and  
Inclusion Manager  
Tel: 551704**

**Chief Officer Responsible for the  
report: Sally Burns  
Tel: 55 1000**

**Report  
Approved**

**Date**

**Wards Affected:**

**All**

**For further information please contact the author of the report**

**Appendices**

**Appendix 1 – Revenue Budget 2011-12 Equality Impact  
Assessment**

## **Appendix 1 - City of York Council Equality Impact Assessment (EIA)**

### **Topic**

The council draft revenue budget for the period April 2011-March 2012

### **Lead officers for this EIA**

Name: Keith Best

Phone Number: x 1000

Job Title: Assistant Director, Corporate Business Support Services

Name: Evie Chandler

Phone Number: x 1704

Job Title: Corporate Equality and Inclusion Manager

### **The purpose of this EIA**

To support councillors in considering the effects of proposals in the revenue budget for the period April 2011 to March 2012, on people with characteristics protected<sup>1</sup> by the council's Fairness and Inclusion Strategy 2009-12 and the Equality Act 2010. "Revenue" is money the council has to run the services it is responsible to deliver on a-day-to-day basis.

### **Date of EIA**

21 January 2011

### **EIA signed off by**

The Council Management Team on 2 February 2011

### **Approach to the EIA**

---

<sup>1</sup> "Protected characteristics" are gender, age, disability, race, religion and belief, sexual orientation, gender reassignment, marriage and pregnancy.

*As part of the budget EIA process this year, when officers examined potential growth and savings areas they considered the following:*

- Will the proposal have a positive or an adverse effect on the general well-being of residents and customers with protected characteristics, thinking about people with multiple characteristics first
- In the case of savings, what will that effect be and is there any nil-cost or lower-cost remedial action that can be taken to lessen it
- Does the proposal concern a service that council has a legal duty to deliver

## Consultation

Three strands of consultation underpin this EIA:

1. A meeting between the Council's senior management team (the Chief Executive and Directors) and equality related community groups was held in December 2010 regarding future needs for council services. Appendix 1 summarises the needs identified at that meeting.
2. In January 2011 officers met with community representatives who are members of the council Equality Advisory Group (EAG)<sup>2</sup>, to discuss key revenue budget proposals. The meeting focused on areas that may have a cumulative negative effect, especially on people with multiple protected characteristics. Comments received from the representatives are in the tables below and the draft notes from the meeting are in Appendix 2.
3. Budget consultations in "Your City" and "You Choose" allowed York residents to give their views about investment and saving areas for 2011-12. Key points to note from these consultations are:
  - Respondents indicated that they would be less willing to pay increased charges for home care services for **vulnerable and elderly residents**.
  - Respondents were more likely to say that funding for **social care services and community safety** should remain the same.

---

<sup>2</sup> EAG advises the Executive on equalities issues in council services



- Respondents were more willing to reduce spending on **young people's services**.

Councillors should also re-consider the results of previous budget consultations, in particular the one for the 2010-11 budget which remains relevant. In summary this showed that **older and disabled** residents **want more investment** in the following areas:

- Road and footpath maintenance: Older respondents – those aged over 75 years and disabled respondents are significantly more likely to want more investment in road and footpath maintenance than respondents overall.
- Facilities for older people: Older respondents – those aged over 75 years, female respondents and disabled respondents are more likely to want more investment in facilities for older people than respondents overall.
- Facilities for disabled people: Older respondents – those aged over 75 years, disabled respondents and non-heterosexual respondents are more likely to want more investment in facilities for disabled people than respondents overall.
- Creating and maintaining jobs: Disabled respondents are more likely to want more investment in creating and maintaining jobs than respondents overall.
- Working with other organisations to reduce crime: Older respondents – those aged over 75 years and disabled respondents are significantly more likely to want more investment in working with other organisation to reduce crime than respondents overall.
- Keeping the streets clean: Older respondents – those aged over 75 years and disabled respondents are significantly more likely to want more investment in keeping the streets clean than respondents overall.
- Providing more affordable housing: Older respondents – those aged over 75 years, female respondents and disabled respondents are more likely to want more investment in providing more affordable housing than respondents overall.

## Emerging equality implications from the draft revenue budget 2011-12

2. Possible revenue budget 2011-12 growth areas that may have cumulative **beneficial** effects on people with protected characteristics

Reference Number	Proposed growth	Equality characteristics affected
<p><b>ACEG06 – Executive Member for Health &amp; Adult Social Services</b></p>	<p><b>Increased Demand – Complex Needs</b>            An additional 10 clients with high dependency complex needs will require support in 2011/12. Three schemes are being developed which will provide long term solutions for individuals and support the agenda of moving away from residential care to more personalised outcomes of care based in the community, which put the individual at the heart of the care planning and management process.</p>	<p>All</p>
<p><b>ACEG08 – Executive Member for Health &amp; Adult Social Services</b></p>	<p><b>Mayfield Court Supported Living</b>            Supported living scheme to provide support for 21 clients. The alternative costs of supporting these individuals</p>	<p>All</p>

Reference Number	Proposed growth	Equality characteristics affected
	through existing support mechanisms is estimated at an additional £330k pa. Therefore a net saving of £136k pa can be made against this projected additional expenditure.	
<b>CSTG12 – Executive Member for City Strategy</b>	<p><b>Future Prospects</b></p> <p>Future Prospects offers a free of charge service to all but often deals with vulnerable citizens</p>	All

2. Possible revenue budget 2011-12 savings areas that may have cumulative **negative** effects on people with protected characteristics

**Executive Member for Health & Adult Social Services**

Reference Number	Proposed saving	Equality characteristics most affected	Comments from EAG
ACES01	Review Of Elderly Persons Homes	<ul style="list-style-type: none"> <li>■ <b>Older people who are disabled and their carers</b></li> <li>■ <b>Older people from black and minority ethnic and LGBT groups.</b></li> <li>■ <b>People who</b></li> </ul>	<ul style="list-style-type: none"> <li>■ Re: increased fees and charges, there is potential for vulnerable people to try to “do without” services they need. Must consult about details and trigger points with representative groups before you implement</li> <li>■ We need more and better council services for people with individual budgets</li> <li>■ Outsourcing older peoples’ care services, needs to be carefully monitored to make sure that quality will not be affected. “The same cannot be done for less”.</li> </ul>
ACES04	Home Support Services		
ACES23	Non Residential Charging Policy		
ACES24	Sheltered Housing Extra Care Support		
ACES28	Care Services (Night)		
ACES46	Adult Contracted Services		
ACES58	Health & Disability Assessment		
ACES60	Respite Care		

Reference Number	Proposed saving	Equality characteristics most affected	Comments from EAG
ACES105	Stroke Strategy	<p><b>have a combination of 3 or more of the characteristics above</b></p>	<p>Make sure the private sector does not increase “administration” charges.</p> <ul style="list-style-type: none"> <li>■ Continue talking to older people about changes that will affect them as they become clearer</li> <li>■ Assess the impact of savings on older people that have other or multiple protected characteristics e.g. LGBT</li> </ul>
ACES109	Expansion of Re-ablement Services.		
ACES112	22 The Avenue / Sycamore House		
ACES114	Supporting People Grant Reduction		
ACES115	Learning Disability Development Fund		

**Executive Member for Children & Young People's Services**

<b>Reference number</b>	<b>Proposed saving</b>	<b>Equality characteristics most affected</b>	<b>Comments from EAG</b>
ACES10	Educational Welfare Service	<ul style="list-style-type: none"> <li>■ <b>Young people who are disabled and their carers,</b></li> <li>■ <b>Young people from black and minority ethnic and LGBT groups.</b></li> <li>■ <b>Young people who have a combination of 3 or more of the</b></li> </ul>	<ul style="list-style-type: none"> <li>■ Preserve Castlegate at all costs.</li> <li>■ Any savings in children services could have a significant impact on the vulnerable. Safeguard provision for them.</li> <li>■ Before reducing any grants to community and voluntary groups, consider the cumulative impact of all cuts from all sources to each of the groups</li> <li>■ Young people priorities for services for the future are:               <ul style="list-style-type: none"> <li>○ Youth participation in decision making and public life</li> <li>○ Support the following</li> </ul> </li> </ul>
ACES12	A Review Of Young People's Services		
ACES13	Review Of Information Advice & Guidance		
ACES14	Early Years & Children's Centres Review.		
ACES41	Targeted Mental Health In Schools		
ACES42	Extended Services Start Up Funding.		
ACES49	Youth Offending Team Proposals		
ACES62	Care Matters		

Reference number	Proposed saving	Equality characteristics most affected	Comments from EAG
ACES63	Staying Put 18+ Project Reduction	<b>characteristics above</b>	<p>services to be provided from one place in York (preferably Castlegate): independent financial advice, careers advice for 14+, housing advice, mental health support, substance misuse advice, counseling, sex and relationships advice, support for young LBGT, support to deal with domestic abuse, a city centre café/activities centre</p> <p>Young people would also like: YOT support for positive activities for young offenders, a police-young</p>
ACES64	Short Breaks For Disabled Children		
ACES66	Remove Aiming High Transition Funding		
ACES67	CAMHS		
ACES72	Two Year Olds Nursery Pilot		
ACES73	KS4 Engagement Programme		
ACES77	14-19 Prospectus		
ACES78	KS2 Career Related Learning.		
ACES81	Children's Fund Budget Reduction		
ACES82	Positive Activities For Young People		

<b>Reference number</b>	<b>Proposed saving</b>	<b>Equality characteristics most affected</b>	<b>Comments from EAG</b>
ACES87	Whole Family Intervention Programme Reduction		persons' liaison officer, youth clubs around the city that provide support for young carers, young people in chaotic families and educational support, arts, drama and festivals, free bus passes for disabled young people, York discount card



**Executive Member for Leisure Culture & Social Inclusion**

<b>Reference number</b>	<b>Proposed saving</b>	<b>Equality characteristics most affected</b>	<b>Comments from EAG</b>
CANS10	<b>Adult Education Service</b> Restructure service to reduce management and administrative costs and maximise fee income		
CANS29	<b>Peripatetic Music Service</b> Review and streamline the current service and focus on teaching in schools rather than in smaller groups	Disabled children (from low income families especially).	<ul style="list-style-type: none"> <li>■ The changes are sensible but the Council should consider: Offering discount vouchers to targeted children; advertise instrument loans/easy purchase options; train teachers to work with children with particular needs.</li> <li>■ Consider the implications for the broader cultural benefit in the city. Targeted assistance/concessions for deprived families. How do we pick talent that we</li> </ul>

Reference number	Proposed saving	Equality characteristics most affected	Comments from EAG
			wouldn't normally?
CANS109	<p><b>Trial Hull Road Park 24/7 opening.</b>  This would see the removal of weekend and evening attendants and leave the park unlocked over night, combined with simplified landscape e.g. remove all bedding planting and replace with grass / shrubs.</p>	All	

**Executive Member for Neighbourhoods and Housing.**

<b>Reference number</b>	<b>Proposed saving</b>	<b>Equality characteristics most affected</b>	<b>Comments from EAG</b>
CANS03	Review all fees & charges to ensure set at appropriate level, recover actual costs and are collected as efficiently as possible.	Age, disability and race where family income is low. Will particularly affect disabled people whose disability benefits will be reduced as well.	There is the potential that vulnerable people will decide to go without the service they need. Need to understand trigger points for different people. Direct consultation is needed with representative groups.
CANS34	Develop foyer scheme for young people to integrate the management of resettlement, temporary accommodation, support and casework	Young homeless people	
CANS77	Remove 2nd attendant from Silver Street toilets	Disability, Age	
CANS79	Review methods of payments for Resident	Disability, Age	

<b>Reference number</b>	<b>Proposed saving</b>	<b>Equality characteristics most affected</b>	<b>Comments from EAG</b>
	Parking and PCNs		
CANS94	Review of pest control service to generate efficiencies and generate additional income	Disability, Age	There is the potential that vulnerable people will decide to go without the service they need. Need to understand trigger points for different people.

**Executive Member for City Strategy**

<b>Reference number</b>	<b>Proposed saving</b>	<b>Equality characteristics most affected</b>	<b>Comments from EAG</b>
CSTS07	Introduction of Pre Application Charges. The charge will not be applied where the development is for a registered disabled person.	<b>Age (Older)</b>  <b>Disabled</b>	<ul style="list-style-type: none"> <li>■ The 50p Park and Ride bus charge is ok but will have implications for disabled people including Blue Badge holders. Make it free or offer concessions for them. <b>Strongly recommend that council charges up to £1 per person per journey and/or that this charge covers all the relevant administrative costs.</b></li> <li>■ Make</li> </ul>
CSTS09/10	Review of Highway Charges. Dial & Ride service to increase by 15p return (8.5%).		
CSTS18	Change to Concessionary Fares Arrangements.		
CSTS32	Change to Concessionary Fares Arrangement for Park & Ride customers		
CSTS39	Park & Ride Expenditure		

Reference number	Proposed saving	Equality characteristics most affected	Comments from EAG
CSTS42	RESPARK charges to increase. Disabled will still be able to apply for free permit.		concessions for disabled people.
CSTS43	Car Park Charges Blue badge holders will still be able to park free of charge		<ul style="list-style-type: none"> <li>■ Keep NO charge for pre-planning application advice when exploring adaptations and access improvements for disabled and older people.</li> </ul>

**Protected characteristics most likely to be affected by growth and savings proposals in the revenue budget 2011-12**

The consultation and EIA analysis above as well demographic information about the population in York, suggest that growth and savings budget proposals are likely to affect people with the following protected characteristics, the most:

- older and younger people who are disabled and their carers,
- people who have a combination of the above protected characteristics and other protected characteristics

Recommended action	Recommended deadline for action	Who
Whilst setting the budget for 2011-12: <ul style="list-style-type: none"> <li>● Prioritise growth expected to have a positive effect on older and younger people who are disabled and their carers</li> <li>● <b>Consider savings</b> expected to have a negative effect on the groups mentioned above, <b>last</b></li> </ul>	March 2011	Executive Full Council
Regarding increases in fees and charges, particularly in adult social care, ask Officers to make appropriate provision for people from the groups above, especially those who have limited financial means	March 2012	Directors and ADs
In cases where service provision is passed on to independent providers, ask Officers to ensure that contractual agreements ensure that people from the groups above receive the same level of service as before or better.	March 2012	Directors and ADs

## **Appendix 1 –**

### **Notes of the meeting between Council Management Team and equality community groups on 10 December 2010**

#### **Needs for future investment as put forward by the community groups attending the meeting**

##### **City Strategy**

1. A Council HQ that is fully accessible to all.
2. Support for vulnerable groups to participate in the local economy. A city-wide disabled people employment policy. More employment opportunities for people with learning difficulties. Need to work more with businesses to encourage assisted employment.
3. Subsidised bus services for young people.
4. Wheelchair accessible buses. Bus passes (concessionary travel) that start before 9am to ensure people with learning difficulties can attend placements and other disabled people hospital appointments.
5. Quality public toilets – important for older and disabled but also important as a tourist city. Encourage businesses, tourist attractions and others to also provide Changing Places facilities
6. More/better-managed city centre parking spaces for disabled people.
7. More fully accessible community meeting spaces

##### **Corporate Business Support Services and Office of Chief Executive**

1. Equality standards in procured service that are the same as in council services.
2. Budget – safeguard community groups that provide support to vulnerable people and council front line services
3. Improved access to council and partner services, starting with minimum standards for accessible written communication. Improve the council switchboard voice-recognition system. More face to face access for older people.
4. Benefits advice for older people



### **Adults, Children and Education ( ACE) –General**

1. When commissioning external services, contracts awarded need specific clauses around inclusive employment practices.
2. Keep community facilitators. They perform an invaluable role linking up provision in the city.
3. Ethnic make up of York is changing fast – council needs to work with voluntary organisations to provide more support.

### **ACE - Children and young people**

1. Support children from an ethnic minority background and raise awareness of cultural differences in schools
2. Tackle homophobic bullying in schools/the community (and in adult sheltered housing).
3. Support for young carers. Need a Young Carers Card Scheme
4. Deal with child poverty. Benefit changes and EMA withdrawal will exacerbate this.

### **ACE - Adults**

1. A CYC policy to employ older people. A lot of hidden unemployment as they do not sign on
2. Support people with mental health problems to access employment or to retrain. CYC needs to lead by example as an employer
3. Deal with older people isolation. Closure of day centres and replacement with individual packages means people have lost their friendships.
4. More information about services for carers and a carer drop-in centre
5. Improve access to services and information for adults with learning difficulties who cannot read – e.g. by using DVDs. Provide more and dynamic employment and training opportunities for them.
6. Lack of respite care for carers is a big issue. Are the hotels that are used safe? Have the packages been designed well? People with autism don't want to go to a hotel – one size doesn't fit all in terms of respite care.
7. Personal budgets that provide a wide of choices.
8. Mental health: recognise that it affects a lot of people. More information about it. A centre or number to ring for people with mental health problems.

## **Communities and Neighbourhoods**

1. Safe, open, shared areas to play and congregate.
2. Community buildings that stay open 7 days a week.
3. Support Black and Minority Ethnic communities to stop feeling both isolated and visible
4. Support third sector to participate in procurement opportunities.
5. Strengthen and develop the relationship between the council and the voluntary sector.
6. Intergenerational activities and festivals that promote diversity
7. Better transport to activities e.g. to special Olympics training (York Wheels don't work after 5pm)
8. Safe and accessible pavements and footpaths
9. Accessible information about services
10. Co-ordinate information about affordable warmth

## Appendix 2

### City of York Council Equality Advisory Group (EAG) Council budget 2011-12 discussion - 19 January 2011

#### Notes from the meeting

##### Present:

**EAG community groups:** York Older People Assembly, Gay Lesbian Bisexual and Trans Forum, York Access Group, York Independent Living Network, York Valuing People Partnership Board, York Humanist Group; York Interfaith Forum, York Travellers Trust, York Racial Equality Network, York Youth Council.

**Officers:** Keith Best (Finance), Sally Burns/Charlie Croft/ Steve Waddington/Evie Chandler (Community and Neighbourhood Services), Paul Murphy/Graham Terry (Adult and Children Services);

**EAG councillors observing:** Cllr N Ayre; Cllr Sonja Crisp; Cllr J Brooks

**Officers observing:** Megan Rule (Office of Chief Executive)

**Apologies:** York Mental Health Forum, Cllr J Gunnell, Higher York, Cllr Aspden

##### Purpose of the meeting

- To give an update about the budget
- To give the opportunity to community representatives to share general thoughts and anxieties about council services they think may be at risk
- To help the officers assess the impact of specific proposals they plan to put to the Executive on 15 February and then to the full council on 24 February
- To discuss possible solutions to deal with any adverse impact for people from the equality strands

## **Budget update – Keith Best**

- In November 2010, council was expecting to have a “cut” of £7.1 in every £100 of “settlement grant” it will get from the government in 2011-12. The position now is that the cut will be £13.3 in every £100.
- The government has also either cut other grants it gives to the council ( like grants for schools) or completely withdrawn other grants like a grant to help the council meet the housing needs of Gypsy and Traveller families.
- As a result, in 2011-12 council needs to find approximately £15 million to balance its budget ( as it must because that is the law). In 2012-12 it will have to find another £4.5 million.
- But pressure for services is growing. This is for various reasons, including an increase in the older people population, children in care as well as the challenges the economy faces.
- Directors have been asked to come up with solutions.
- Also council has asked residents what they want to keep in terms of services and where savings should happen. This included YOUR CITY budget consultation October 2010; YOU CHOOSE electronic survey; the meeting between EAG and the council Chief Executive and Directors in December 2010 and the discussion with EAG today.

## **City Strategy (CS) – Roger Ranson**

### **Key points about City Strategy budgets**

- City Strategy needs £37 million per year, but gets £29 million income. So it needs £8 million per year.
- The pressures that City Strategy faces in 2011-12 include: decreased income from planning applications and car parks; government grant for local transport (currently £6 million) will go down to £1 million; the Cycling City grant of £3 million will stop in March 2011; although the economy has done better in York there is still unemployment to be dealt with.

### **City Strategy specific proposals for EAG to consider**

- As the money that government gives to council for concessionary fares will decrease, charge 50p per journey per person to and from Park and Ride car parks. It was free so far. This will mainly affect car-using visitors rather than residents.

- Charge for pre-application planning team advice which was free so far.

#### **EAG comments:**

- The 50p Park and Ride bus charge is ok but will have implications for disabled people including Blue Badge holders. Make it free or offer concessions for them. **Strongly recommend that council charges up to £1 per person per journey** and/or that this charge covers all the relevant administrative costs. Make concessions for disabled people.
- Keep NO charge for pre-planning application advice when exploring adaptations and access improvements for disabled and older people.

#### **Adult, Children and Education Services (ACE) - Paul Murphy (Children)/Graham Terry (Adults)**

##### **Key points about ACE budgets**

- There are more older residents in York than younger. Their numbers will increase in future a lot more than the number of younger residents. Demand for older people's care services will increase
- The directorate spends £70 of every £100 spent by the entire council. So it will be affected a lot by council budget reductions.
- Most of the money the directorate gets from the government is for the benefit of deprived or disadvantaged groups. Any cuts from the government will affect them the most.
- Grants given by the government to council to support community and voluntary sector groups that offer services for older people have not been cut.
- In making their recommendations to councillors, officers will consider:
  - The effect on community groups, trying to protect them as much as possible. Officers will consider the overall impact of cuts on each group from all sources, not just the council.
  - The effect on the most vulnerable people from the equality strands.
  - The impact on what that the directorate wants to achieve for the people it serves.
  - Renegotiating all contracts with external suppliers.
  - Preserving services for the most vulnerable even if the government grant has been reduced or cut.

- In the case of older people services, will it be cheaper and as good or better for the independent sector to provide provided? ( 85% of older people services are already provided by the independent sector)
- Increases in fees and charges across the directorate
- Freeing up as many resources as possible from “traditional” adult services to fund individual budgets ( personalisation)

### **Specific children services proposals for EAG to consider**

“Universal services” ( i.e. services that are free to all) will be looked at with a view to:

- targeting them to the most vulnerable families; stop providing as many services for other families
- withdraw some that are not essential for everyone and/or not used as much by vulnerable families (like the mobile toy library)
- invite the community and voluntary sector to use council-owned premises to re-provide some of the services that council cannot afford to provide anymore ( with reduced or no council financial assistance...)

### **EAG comments**

- Preserve Castlegate at all costs.
- Any savings in children services could have a significant impact on the vulnerable. Safeguard provision for them.
- Before reducing any grants to community and voluntary groups, consider the cumulative impact of all cuts from all sources to each of the groups
- Young people priorities for services for the future are:
  - Youth participation in decision making and public life
  - Provide/support the following services to be provided from one place in York (preferably Castlegate): independent financial advice, careers advice for 14+, housing advice, mental health support, substance misuse advice, counseling, sex and relationships advice, support for young LBGT, support to deal with domestic abuse, a city centre café/activities centre
- Young people would also like: YOT support for positive activities for young offenders, a police-young persons’ liaison officer, youth clubs around the city that provide support for young carers, young people

in chaotic families and educational support, arts, drama and festivals, free bus passes for disabled young people, York discount card

### **Specific adult services proposals for EAG to consider**

- Review older people's homes provision in the near future. In the meantime make them operate as efficiently as possible.
- Increase fees and charges for those who can afford it. Some people who can afford it may end up paying 100% of the cost of the service they receive from the council

### **EAG comments**

- Re: increased fees and charges, there is potential for vulnerable people to try to "do without" services they need. Must consult about details and trigger points with representative groups before you implement.
- We need more and better council services for people with individual budgets
- Outsourcing older peoples' care services, needs to be carefully monitored to make sure that quality will not be affected. "The same cannot be done for less". Make sure the private sector does not increase "administration" charges.
- Continue talking to older people about changes that will affect as they come are becoming clearer.
- Assess the impact of savings on older people that have other or multiple protected characteristics e.g. LGBT

### **Community and Neighbourhood Services (CANS) – Sally Burns (Director); Charlie Croft (Culture and Leisure); Steve Waddington ( Housing)**

#### **Key points about CANS work and budgets**

- CANS have £14 million per year for front line services. They range from waste collection to housing repairs and supporting council tenants' associations in making sure their areas are clean safe and inclusive.
- CANS has already made savings from organising back office operations.. However they need to find more savings for 2011-12.

### **Specific CANS proposals for EAG to consider**

- Housing: The numbers of both homeless people as well as people in temporary accommodation in York has gone down significantly because of work done by housing services and their partners recently. Therefore, officers will propose a reduction in temporary accommodation places.
- Music service : Reduce council subsidy to teachers teaching music one –to-one to school children. The service will continue but teachers will have to charge pupils for lessons. Schools will still provide rooms for the teachers to teach in but may charge them for this. Whole class music lessons that are part of the curriculum will remain unaffected and the subsidy for whole class lessons will remain for one extra year in primary schools. Weekend and week-night free lessons in music centres will continue.
- Fees and charges (for services like pest control, commercial waste, leisure, licensing etc) will go up to provide an additional £50,000 income.
- Green waste collections: Monthly ( not fortnight) collections from October to Easter

### **EAG comments**

- Travellers need more pitches in York
- Green waste collection: Consider using the voluntary sector e.g. Brunswick Nurseries. Also consider selling compost for profit and providing compost bins to reduce green waste. Collections could be cut to monthly or it might be better to collect only when customers have positively asked to have a collection
- Charges for services: There is the potential that vulnerable people will decide to go without the service they need. Need to understand trigger points for different people. Direct consultation is needed with representative groups.
- Libraries: The Council should retain staffed points in libraries in addition to self-issue machines
- Changes proposed to the music service are sensible but the Council should consider: Offering discount vouchers to targeted children; advertising instrument loans/easy purchase options; training teachers to work with children with particular needs. Also should consider the implications for the broader cultural benefit in the city. Introduce targeted assistance/concessions for deprived families.



- Voluntary sector: Consider the cumulative impact of cuts to voluntary organisations that get grants from several streams. Such organisations will need support and advice to find alternative sources of funding. Communication from the council to the voluntary sector needs to improve so that we can have a realistic discussion about how we can work together
- Culture Services: Have a community café/conversation about next steps with culture in the city
- Consider the following **savings ideas**:
  - Rationalise user cards e.g. issue one card to the same person to use in the library, for swimming, buses etc. The charge for *YORKCARD* is ok but concessions are needed for disabled, older and younger
  - Put multiple functions in one building like in St Sampson's
  - Recruit older volunteers for some tasks. They are likely to have more time and capacity to help

This page is intentionally left blank